



**Douce Corporation**



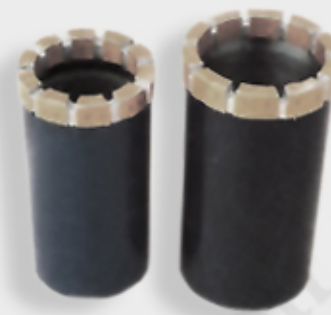
**Diamond Drilling Tools and Accessories**



To optimize extractions of the best solid cores  
Douce Corporation diamond drilling tools and accessories

**G1. Conventional double tube core bit, flat bottom.**

The bit is usually manufactured with synthetic diamond abrasives. According to the hardness and abrasiveness of the rock to be drilled, bits with different abrasive matrixes can be supplied for drilling in medium hard, hard and very hard formation. Also, bits can be impregnated set with fine natural diamond or the mixture of natural diamond and synthetic diamond according to customer's requirement.



**G2. Conventional double tube core bit, arc face.**

Its performance and application are similar to G1 bit, but especially suitable for percussive rotary drilling and drilling in fractured rock.

**G3. Synthetic diamond electroplated conventional double tube core bit.**

With no high temperature damage to the diamond, this bit is suitable for drilling in intact medium hard and hard rock.



**G4. Conventional double tube impregnated core bit, staggered teeth.**

This bit is usually manufactured with synthetic diamond while the teeth are made with the mixture of natural diamond and synthetic diamond, or with medium sized natural diamond to improve its anti-abrasiveness. For drilling in intact medium hard, hard and very hard formation.

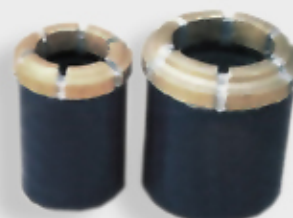


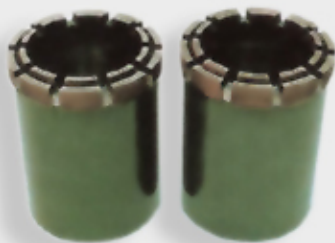
**G5. Wireline impregnated core bit, flat bottom.**

This bit impregnated set with synthetic diamond and columnar polycrystalline diamond set as the gauge stone, can be applied to wireline core drilling in medium hard medium abrasive formation.

**G6. Impregnated wireline core bit, single step.**

The bit impregnated set with synthetic diamond and columnar polycrystalline diamond set as the gauge stone, is suitable for wireline core drilling in medium hard, hard and very hard formation also with reliable applications in fissured hard formation.





G7. Impregnated wireline core bit, V ring and single step.

The bit impregnated set with synthetic diamond or mixed set with synthetic diamond and fine natural diamond and set with columnar polycrystalline diamond set as the gauge stone, is applicable to medium hard, hard and very hard formation as well as fissured formation.

G8. Impregnated wireline core bit, staggered face.

This bit is mixedly set with synthetic diamond and fine natural diamond and with columnar polycrystalline diamond set as the gauge stone. It is suitable to wireline core drilling in intact hard, very hard formation especially suitable to small capacity drill.



G9. Step type impregnated wireline core bit, staggered teeth.

Impregnated set with synthetic diamond and the teeth are mixedly set with synthetic diamond and fine natural diamond, this bit is suitable to wireline core drilling in intact medium hard, hard and very hard rock, also with a satisfactory result in drilling plastic soft and hard interbedded formation.



G10. Electroplated synthetic diamond wireline core bit.

Being similar to G3 in performance, this bit is suitable to wireline core drilling in intact medium hard and hard rock.



G11. Conventional single tube impregnated core bit flat bottom.

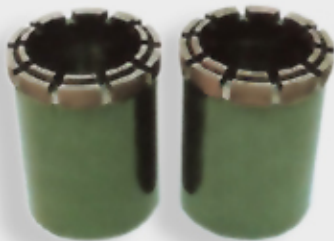
This bit is set with synthetic diamond and fine natural diamond and with columnar polycrystalline diamond for gauging. It is suitable for drilling in intact medium hard, hard and very hard rock, especially for shallow hole drilling, underground drilling and engineering drilling. Also, it can be used when the core is seriously blocked during drilling operation with double tube core barrel.



G12. Natural diamond surface set double tube core bit.

It is suitable for intact medium hard to hard rock. The size of the diamonds used is 15 to 25, 25 to 35, 35 to 45 spc.





G13. Natural diamond surface set wireline core bit, arc face.

The bit is suitable for intact medium hard, medium hard - hard formation. The size of diamonds used is 15 to 25, 25 to 35, 35 to 45 spc.

G14. Natural diamond surface set wireline core bit, multi step.

It is suitable for intact medium hard, hard rock. The diamonds used are 15 to 25, 25 to 35, 35 to 45 spc.



G15. Natural diamond surface set single tube core bit.

It is suitable for shallow hole drilling and under ground drilling in intact medium hard and hard rock.



G16. PDC double tube core bit.

For intact soft-medium hard rock drilling with high drilling rate and long service life.



G17. PDC wireline core bit.

According to bit size, 8mm, 10.5mm and 13mm PDCs are used. The bit is suitable for wireline core drilling in soft to medium hard thick formation.



G18. Conventional polycrystalline diamond double tube core bit, mixedly set.

This bit is impregnated and surface set with columnar polycrystalline diamond, suitable for drilling in soft and medium hard above medium abrasive rock.



# OTHER CORE DRILLING TOOLS

Not Exhaustive List

HQ Adaptor Coupling	HQTT Tungsten Core Bit
HQ3 Core Case	NQ Adaptor Coupling
HQTT Core Case	NQ3 Core Case
HQ Core Lifter / Spring	NQ Core Lifter / Spring
HQ Inner Tube Stabilizer	NQ Inner Tube Stabilizer
HQ Locking Coupling	NQ Locking Coupling
HQ Landing Ring	NQ Landing Ring
HQ Stop Ring	NQ Stop Ring
HQ3 Diamond Core Bit	NQ3 Diamond Core Bit
HQ3 Tungsten Core Bit	NQTT Core Case
HQ3 Tungsten Oversize Reamer	NQTT Diamond Core Bit
HQ Diamond Casing Advancer Shoe	PQ3 Core Case
HQ Tungsten Casing Shoe	PQ Core Lifter / Spring
HQTT Diamond Core Bit	PQ Stop Ring
NWM Core Bit	PQ3 Diamond Core Bit
	PW Diamond Casing Shoe

## “Q” Series Rods

Nominal Size	O.D. in mm	I. D. in mm	Length in mm
NQ	70	60	3000
			1500
HQ	89	77	3000
			1500

## Core lifter, Core-lifter case, Extension tube

<b>Nominal Size mm</b>	46	56	59	60	75	76	91	93	101	112	151
------------------------	----	----	----	----	----	----	----	----	-----	-----	-----

### Core Barrel Single Tube

<b>Nominal Size mm</b>	46	56	59	75	76	91	110	130	150
<b>Size mm</b>	44×4	54×4	57×3.15	73×4	73×3.75	89×4	108×4.25	127×4.5	146×4.5

### Double Tube

<b>Nominal Size mm</b>	46	56	59	75	76	91	101	110	112
<b>Outer Tube Size</b>	45×3.5	55×3.5	58×3.5	73×3.75	75×3.5	89×4	99×3.5	108×4.25	108×4
<b>Inner Tube Size</b>	35×2	45×2	47.5×2	62×2.75	65×2	77×3.5	90×2.5	95×3	89×4